



# A bio-insecticide for the control of whitefly

- Contains  $4.4 \times 10^{10}$  CFU/g of *Beauveria bassiana*
- Can be used as part of an effective IPM system
- Low chance of resistance due to MOA
- No MRL
- Zero day harvest interval

## Mode of action

1. *Beauveria bassiana* spores make contact with the insect cuticle
2. The spores then germinate and the germ tubes penetrate the cuticle. A process which takes between 24 and 48 hours
3. The fungus continues to grow within the insect, eventually taking over its hosts body completely. This results in the death of the insect after 5-7 days

## Application Best Practice

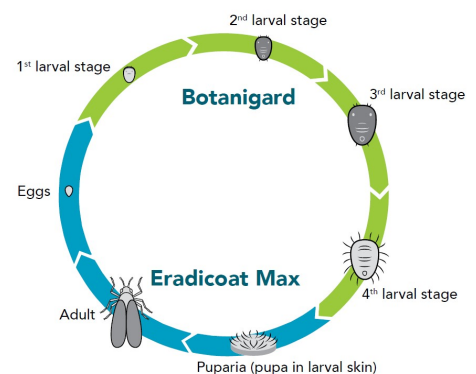
Botanigard works best when applied in the following conditions:

- Temperatures between 20 - 30°C
- Relative humidity >70%
- Avoid high UV levels

This can be easily achieved using late evening applications

## Programme Approach

A mixture of Botanigard and a 1% solution of Eradicoat effectively targets all stages of the whitefly pest providing the best possible efficacy



<b>Formulation</b>	A wettable powder containing 220g/kg <i>Beauveria bassiana</i> GHA present as $4.4 \times 10^{10}$ CFU/g MPCA (minimum $3.7 \times 10^{10}$ CFU/g MPCA; maximum $5.2 \times 10^{10}$ CFU/g MPCA)		
<b>Crops</b>	Strawberries, aubergines, courgettes, squash, cucumbers, melons, sweet peppers, chillies, tomatoes, ornamental plants and nursery fruit trees		
<b>Max individual dose</b>	62.5g product/ 100L Water	<b>Spray interval</b>	5 - 7 days
<b>No. applications</b>	5 per crop	<b>Harvest Period</b>	0
<b>Pack size</b>	0.5Kg	<b>MAPP no.</b>	17054

